

Tranman Enhancement Pack now available

Enhance your Tranman experience and increase efficiency with our new Enhancement Pack!

Contains:

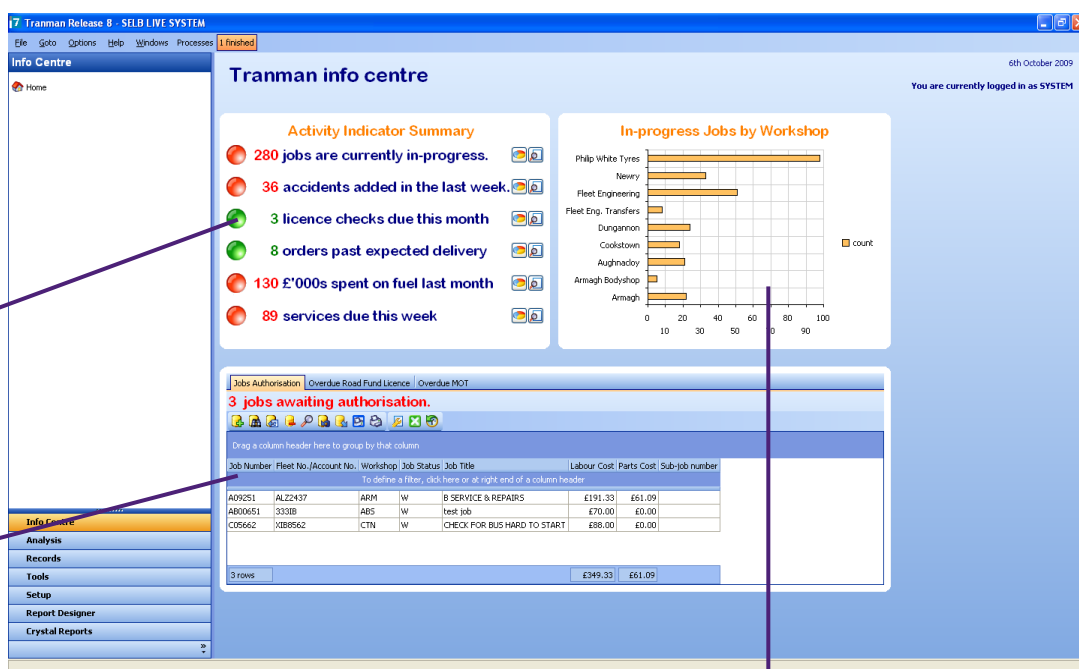
- > Tranman Info Centre
- > Graphs integrated into Tranman summaries
- > Calendar views to display any date information.

Tranman Info Centre

The new info centre displays immediately after logging into Tranman, and shows the key information relevant to the user's role, with a traffic light system highlighting key areas of concern. This ensures that the issues that need to be dealt with are not ignored and can be found quickly.

Tranman Info Centre Benefits:

- > Totally flexible! You decide what information is shown to each user.
- > Drive your business processes through Tranman
- > Simple traffic light system to highlight areas that need attention
- > Graphs show summarised information instantly
- > Drill into data straight from info centre or associated graph.



Traffic light system highlights problem areas.

Key Tranman summaries shown instantly on login.

Each KPI has its own graph summarising the information. Drill down straight from here.

Integrated Graphs

We can now display data graphically as part of the standard Tranman user interface, this allows you to make decisions quickly, and give users the overall picture to ensure those decisions are based on the latest information. For example when you select a job we can show the cost of jobs broken down by repair cause.

Integrated Graphs Benefits:

- > Users see the whole picture
- > Reduce the number of reports that need to be run
- > Decisions are made accurately with the latest data simply displayed.

The screenshot shows the Tranman software interface with a job record table and a pie chart. The job record table lists various jobs with columns for Job No., Stock, Job Number, Job #, Workshop, Job Title, Booked In, and Work Started. The pie chart, titled 'Cost by Repair Cause', shows the distribution of costs across different repair categories. A callout box points to the pie chart with the text: 'Display any data such as Total cost by repair cause in a Pie Diagram'.

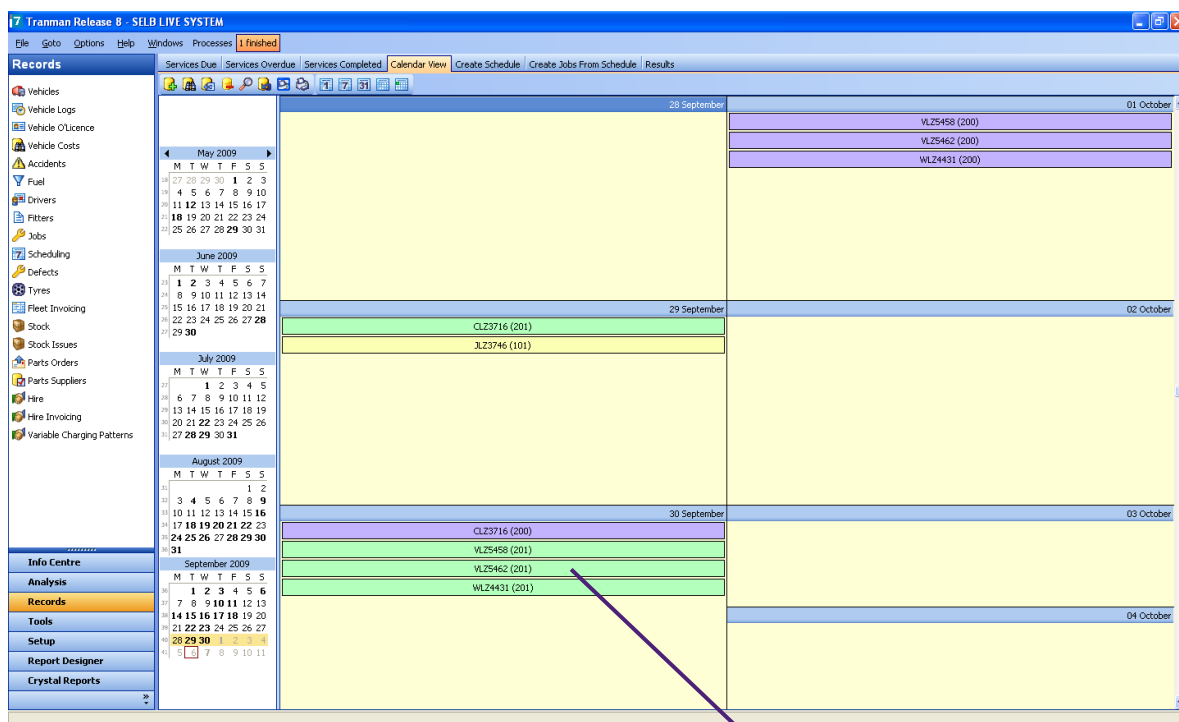
Display any data such as Total cost by repair cause in a Pie Diagram

The screenshot shows the Tranman software interface with a stock record table and a bar chart. The stock record table lists various stock items with columns for Part Type, Loc, Bin, Part Description, Part Number, and Qty. The bar chart, titled 'Supplier Spend Analyse', shows the total spend by supplier. A callout box points to the bar chart with the text: 'Total spend by supplier displayed when looking at stock records'.

Total spend by supplier displayed when looking at stock records

Calendar Views

Our new calendar tool allows you to display any dates in Tranman in a convenient and simply calendar view. Perfect for showing service schedules or tax and MOT due data. Other uses include displaying vehicle replacement policies or vehicle availability for hire.



Calendar View Benefits:

- > Simple layout, clean and clear
- > Plan tasks quickly and effectively
- > View calendar daily, weekly, monthly, yearly or even Gantt style
- > Drill into data straight from calendar.

Display service due data as calendar view. Here we are showing registration number and service type due as a calendar item.